

Total Solution for Portable Air



ELGI

Think Long Run

About us....

ELGI EQUIPMENTS LIMITED, Asia's largest and most integrated Compressors manufacturer is the flagship company of the ELGI group, a reputed business house in India. The company has evolved over four decades to emerge as a multi-market enterprise to meet global challenges.

- Four core product divisions
 - Reciprocating Compressors
 - Rotary Compressors
 - Automotive Equipment
 - Diesel Engines
- Over half a million Compressors in operation worldwide
- 500 Vendors across the globe
- Business partners in over 30 countries
- Developing over 15 Compressors every year
- 1,100 dedicated workforce with 325 engineers
- Worldwide network of Offices & Service Centers

Technology

The company stays on the leading edge of technology through technical tie-ups with global leaders like City University, London for the new range of energy saving air ends, Hitachi, Japan for Oil-free screw air compressors and with Samsung Techwin, Korea for Centrifugal Air Compressors

ELGI exports products of proven quality like rotary screw air compressor units and reciprocating air compressor units to compressor manufacturers / packagers in USA, Europe, Japan, Australia, Malaysia, Mexico, Thailand and other countries. ELGI adheres to ISO 9001:2000 quality system and practising Six Sigma and TPM. ELGI has streamlined its business processes by implementing the latest in ERP solutions from BaaN of Netherlands.

Quality

Capability

ELGI's two state-of-the-art plants in Coimbatore, India are spread over 30 acres of land and 350,000 sq. ft. of factory area. The plants are well-equipped with sophisticated CNC helical rotor cutting machines, tool management centers and totally integrated machine shop with an array of hi-tech CNC machining centers. In short, ELGI has total in house capabilities to design and manufacture products to international quality standards.

All ELGI compressors come to you with a commitment of providing world class after sales service, both during and after warranty period. A toll free number, accessible round the clock, assists you in contacting the company immediately for your service requirements and a highly sophisticated, totally computerised customer care system ensures that your service requirements are attended to on top most priority.

Service

OUR VISION

ELGI aims to be a meaningful player worldwide in its core products, which would feature prominently in a customer's considered set by 2005



Highly efficient single unit two stage intake **Air Filtration System** for better output and enhanced compressor life



Air Ends – the heart of ELGI compressors, has a unique rotor profile design of 4/5 lobe combination which delivers higher output with lesser power

All controls are grouped on a single **Control Panel** for easy monitoring, safety and fool-proof operation



Reliable **Spare Parts** from ELGI, easily available at most competitive prices ensure low maintenance and running costs



Technical Specification

Model	Free Air Delivery		Nominal Working Pressure		Engine	Overall Dimension, mm		
	m ³ /min	cfm	kgf/cm ² g	psi g		Length	Width	Height
DL 03 007	4.96	175	7	100	HA 494, KOEL	3485	1580	1590
DL 04 012	8.51	300	7	100	ALU 6.65, AL	3410	1720	1880
DL 04 012	8.51	300	7	100	4 BT, Cummins	3140	1720	1940
DH 04 012	8.51	300	10.5	150	N 495 C, Cummins	4700	1700	2550
DL 05 016	11.35	400	7	100	N 495 C, Cummins	4300	1860	2543
DH 05 018	12.77	450	10.5	150	NT 495 C, Cummins	4300	1860	2543
DL 05 024	17	600	7	100	NT 495 C, Cummins	4302	1860	2543
DH 06 026	18.4	650	10.5	150	N 743 TC, Cummins	5680	1780	2600
DH 06 030	21.27	750	10.5	150	NT 743 C, Cummins	5825	2100	3100
DV 06 032	22.6	800	14	200	NT 855 C, Cummins	4562	1634	3270
DV 06 036	25.48	900	14	200	NTA 855 BC, Cummins	4562	1634	3270
* DX 23 030	21.27	750	17.5	250	NTA 855 BC, Cummins	4562	1734	2770
* DZ 23 036	25.48	900	24.5	350	KTA 1150 C, Cummins	4200	2100	2690
* DU 23 040	28.32	1000	19.5	275	NTA 855 BC, Cummins	4562	1734	2070
* DY 23 044	31.14	1100	21	300	NTA 855 BC, Cummins	4562	1734	2070
* DZ 23 044	31.14	1100	24.5	350	KTA 1150 C, Cummins	4300	2150	2770
* DR 23 056	39.64	1400	28	400	KTT 19 C, Cummins	4410	2230	2484

Note:

1. The models included in the above table are our standard models and are for intermittent duty cycle.
2. For your requirement of non-standard models and continuous duty rating compressors, please contact us at our branch office nearest to you.
3. Models marked (*) are available in skid mounted version only. Other models given above are available both in skid and trolley mounted versions.
4. Due to constant engineering improvements, the above specifications are subject to change. Please check up with us for the current specifications at the time of order placement.

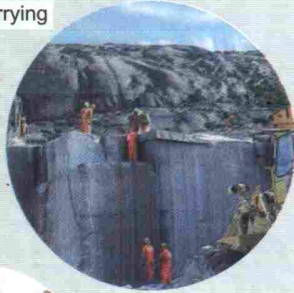
Other products in our range:

1. Oil Flooded Electric Powered Screw Air Compressors from 60 to 1500 cfm FAD @ working pressure from 7 to 15 kgf/cm²g
2. Oil Free Electric Powered Screw Air Compressors from 550 to 1700 cfm FAD @ working pressure from 3 to 10 kgf/cm²g
3. Centrifugal Air Compressors from 1500 to 8500 cfm FAD @ working pressure from 3 to 10 kgf/cm²g

Tunneling



Quarrying



Road Construction



Pipeline Testing



Sand Blasting



Pigging



Piling



Different Applications
Various Models
One Company - **ELGI**

CBM Drilling



Construction



Participating in India's Progress

ELGI EQUIPMENTS LIMITED

Branch	NSD Code	Tel.No	Fax	Branch	NSD Code	Tel.No	Fax
Ahmedabad	079	26583736/26581274	26587683	Kochi	0484	2360155	2351904
Bangalore	080	22240674/22220296	22293274	Kolkata	033	22834270/22834271	22834272
Bhopal	0755	2578281/2578317	2578289	Madurai	0452	2609766	----
Chennai	044	28586699/28513599	28586499	Mumbai	022	28591905-6/28501682	28591601
Coimbatore	0422	2574691	2573697	New Delhi	011	25928593/25928095	25459375
Hyderabad	040	27768326/27768226	27768327	Pune	020	27145288/27148892	27145289
Jaipur	0141	2375595	2377100	Tiruchengode	04288	257137	257693

ELGI

ROTARY COMPRESSOR DIVISION
ELGI EQUIPMENTS LIMITED
Singanallur, Coimbatore, TN - 641 005, India
Domestic Business International Business
Tel : +91-422-2574691 +91-422-2574691
Fax : +91-422-2591384 +91-422-2576849
e-mail: rocd@elgi.co.in export@elgi.co.in

URL : www.elgi.com

Toll Free No. : 1600 33 3544

TOTAL AIR SOLUTION