

ELGI

Think Long Run

PORTABLE
Diesel Powered
Screw Air Compressor

Total solutions for portable air

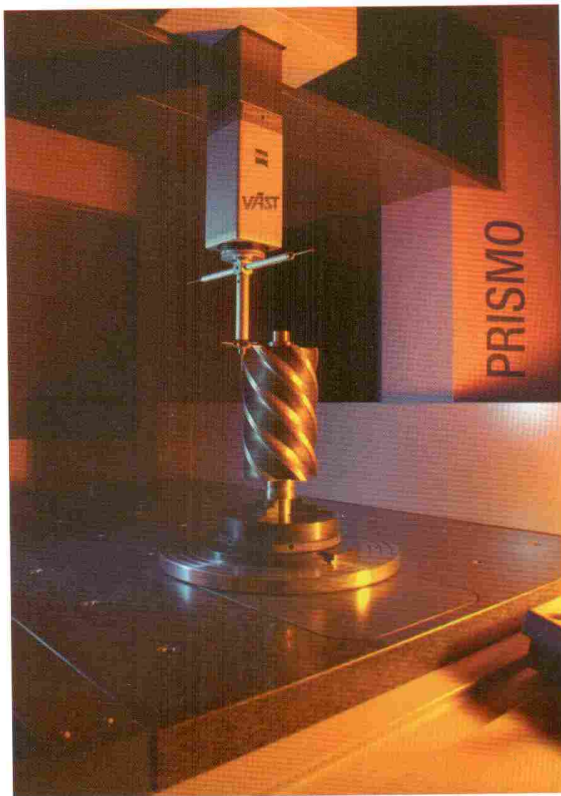


Think Long Run

ELGI A SIGNIFICANT TRADITION



Elgi Equipments Limited is Asia's largest, integrated compressor manufacturer, providing comprehensive compressed air solutions since 1960. Today, the company has attained the stature of a multi-product, multi-market enterprise capable of meeting global challenges. Driven by innovative spirit and guided by foresight, Elgi moves forward in its quest for excellence.



OUR DISTINCTION

- We enjoy the reputation of having developed the world's smallest screw air compressor
 - We manufacture over 80,000 air compressors every year. Manufacturing process guided by International quality systems.
 - Strategic business partnerships and technical collaborations with global leaders.
 - 30% of our products exported to end-users and OEMs in more than 60 countries across the world. Today, over a million Elgi compressors empower businesses worldwide, and we're fast emerging a major player in the global market for compressors.
- We pioneered the concept of customer care system in the compressor industry. We provide prompt, incomparable after-sales-service through our well-knit sales and service network that ensures an Elgi contact point within 50 km. from anywhere in India.



ELGI SIGNIFICANT FEATURES THAT SET PORTABLES APART



EFFICIENT AIR INTAKE FILTERS

Highly efficient single unit two stage intake air filtration system for better output and enhanced compressor life.

UNIQUE 'N' PROFILE RELIABILITY

Airend, the heart of Elgi compressors has a unique rotor profile design of 4/5 lobe combination which delivers high output with less power.



INSTRUMENT PANEL

All controls are grouped on a single control panel for easy monitoring, safety and fool-proof operation.

IDEAL FOR TROPICAL CLIMATE

Elgi portable screw air compressor is specially designed to perform at high ambient temperatures - from hot summer to cold winter and from dry to extremely humid conditions.



OPTIMIZED ENGINE

The robust engine has been coupled to the compressor unit ensuring a longer life of the engine. A highly fuel efficient engine allows significant fuel savings and lower running costs.

LOW RUNNING COST

To ensure optimum performance of portable screw air compressor, Elgi offers quality service and spare parts. Genuine Elgi spares are economically priced; hence the running cost remains very low.



An UBIQUITOUS DEALER NETWORK

Elgi has a well-knit sales and service network covering the entire nation. There's certainty of an Elgi contact point within 50 km from anywhere in India.

SPARES A SIGNIFICANT BACK-UP



Genuine Elgi spares are designed, manufactured and checked for quality to the exacting standards of a new compressor. Genuine Elgi spares undergo continuous improvement to provide best results. Elgi genuine spares signify quality and offer increased life and dependable performance for compressors.

Spares back-up

We have two levels of spares back-up to significantly reduce the possibility of compressor breakdown. Both the levels are adequately stocked after thorough planning to ensure 'off-the-shelf' availability of parts that the customers will require from time-to-time.

Breakdowns

In the unlikely event of any product breakdown, we have a policy of shipping necessary parts from the main stores within 24 hours by the fastest mode of courier.

ELGI genuine compressor oil

- Elgi AIRLUBE for portable screw compressors with an assured life of 500h
- Elgi AIRLUBE Plus - a premium mineral oil for portable screw compressors with an assured life of 1000 h
- Elgi AIRLUBE DURAPLUS - a premium synthetic oil for portable screw compressors with an assured life of 4000 h

AMC A SIGNIFICANT MAINTENANCE PLAN



To ensure consistently good performance of the compressor, it is imperative to have a periodical check-up and maintenance service. Prevention is better than cure, and timely maintenance service will protect your compressor from unexpected break downs. Maintenance services shall consist of periodical and corrective maintenance of the compressors / accessories.

Annual Maintenance Contract

To avail easy and thorough maintenance service for your compressor, we request you to enter into an Annual Maintenance Contract with us and assure yourselves of the following benefits:

- Saving in energy consumption
- Reduction in compressor running expenses

The ELGI Edge - In Black & White

Model	Free Air Delivery		Nominal Working Pressure	Engine	Overall Dimension, mm		
	m ³ /min	cfm	psi g		Length	Width	Height
Trolley Mounted							
DL 03 007	4.96	175	100	HA 494, KOEL	3485	1580	1590
DL 04 012	8.50	300	100	ALU 6.65, AL	3410	1720	1880
DL 04 012	8.50	300	100	4 BT, Cummins	3160	1720	1932
DL 04 012	8.50	300	100	W04D Hino AL	3060	1720	1690
DH 04 012	8.50	300	150	4 BT, Cummins	3160	1720	1932
DL 04 014	9.91	350	100	4 BT, Cummins	3160	1720	1932
DL 05 016	11.33	400	100	W04CT, AL	3060	1720	1690
DH 05 016 C	11.33	400	150	6 BTA, Cummins	4375	1620	2400
DH 05 018	12.74	450	150	6 BTA, Cummins	4375	1620	2400
DL 05 024	17.00	600	100	6 BTA, Cummins	4375	1620	2400
DV 06 026	18.40	650	200	6 CTA, Cummins	5680	1780	2600
DM 06 030 C	21.24	750	125	6 CTA, Cummins	5680	1780	2600
Skid Mounted							
DH 05 019	13.45	475	150	6 BTA, Cummins	2750	1100	1837
DV 06 026	18.40	650	200	6 CTA, Cummins	3000	1675	2100
DV 06 036	25.49	900	200	NTA 855 BC, Cummins	4865	2200	3110
DX 23 030	21.24	750	250	NTA 855 BC, Cummins	6090	2300	3050
DZ 23 036	25.49	900	350	KTA 1150 C, Cummins	4200	2100	2690
DU 23 040	28.32	1000	275	NTA 855 BC, Cummins	4562	1844	2370
DY 23 044	31.15	1100	300	NTA 855 BC, Cummins	4562	1844	2370
DZ 23 044	31.15	1100	350	KTA 1150 C, Cummins	5750	2100	2338
DZ 23 048	33.98	1200	325	NTA 855 BC, Cummins	4562	1844	2370

Note

1. The models included in the above table are our standard models and are for intermittent duty cycle.
2. For your requirement of non-standard models and continuous duty rating compressors, please contact us at our branch office nearest to you.
3. Due to constant engineering improvements, the above specifications are subject to change. Please check up with us for the current specifications at the time of order placement.

Other products :

1. Oil Flooded Electric Powered Screw Air Compressors from 60 to 1500 cfm FAD @ working pressure from 7 to 15 kgf/cm²g
2. Oil Free Electric Powered Screw Air Compressors from 550 to 1700 cfm FAD @ working pressure from 3 to 10 kgf/cm²g
3. Centrifugal Air Compressors from 1500 to 7500 cfm FAD @ working pressure from 3 to 10 kgf/cm²g

TOLL-FREE TELEPHONE NUMBER :1800-425-3544



The Customer Care System (CCS) at Elgi is an integrated in-house system that aims to provide superior after-sales-service to customers. Customers can call the toll-free telephone number 1800-425-3544 and register their service requirement or complaints. The customer gets an automatic e-mail acknowledgment with details of the logged call and the tracking number for future reference. The customer care service is extended to Elgi dealers as well. Dealers can log their customer calls through this system and know whether their customer service request has been closed.

Different Applications
Various Models
One Company
"ELGI"



Pipeline Testing



Tunneling



Quarrying



CBM Drilling



Pigging



Construction



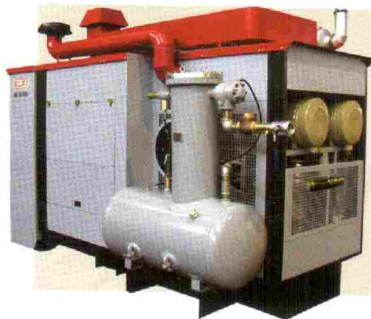
Mining



Sand Blasting



Piling



Water-well drilling



The Long Run Benefits only with ELGI

Over 45 years of experience and continuous innovations make the Elgi Portable Trolley Mounted Diesel Powered Screw Air Compressor such a brilliant solution for you. There are a million Elgi machines powering businesses in 63 countries worldwide. They are exceptionally dependable and engineered to global practices like Six-sigma, TPM, TQM and Quality Circles. Added to innumerable product advantages is the invaluable edge of service. A vast dealer network spanning India and the world ensures easy availability and prompt service. The fact is those who think long run, insist on Elgi.

Branch	Area Code	Tel. No	Fax	Branch	Area Code	Tel. No	Fax
Ahmedabad	91-79	26583736 26581274	26587683	Hyderabad	91-40	27768326 27768226	27768327
Bangalore	91-80	22240674 22220296 22122479	22293274	Jaipur	91-141	2375595	2377100
Bhopal	91-755	2578281 2578317 5273317	2578289	Kochi	91-484	2360155	2351904
Chennai	91-44	28586699 28513599 28555199 28553599	28586499	Kolkata	91-33	22834270 / 71	22834272
Coimbatore	91-422	2589223	2573697	Mumbai	91-22	28591905	28591601
				New Delhi	91-11	25153644 25928097 25153644	25459375
				Pune	91-20	27145288 27148892	27145289

Due to continuous engineering improvements, specifications are subject to change. Pictures shown in this folder are representative and not the entire range.

ELGI Equipments Limited

Singanallur, Coimbatore - 641 005, Tel: +91- 422 - 2589555 Fax: +91- 422 - 2573697
International Division : Fax : +91-422-2576849 E-mail : enquiry@elgi.com Visit us at : www.elgi.com
Toll free customer care number (India) : 1800 - 425 - 3544

